

Honey Extraction & Processing

Product Catalogue



CrystechNZ is all about providing the highest quality honey extraction and processing equipment which meets NZ Food Grade Standards. We can provide an individual piece of equipment or a complete turnkey solution that is fit for your business needs – taking your product from the hive to the shelf.



FROM THE HIVE TO THE SHELF

"CrystechNZ is an outstanding company. They delivered a fantastic product on time and are a good team to work with. I would recommend them to any company or person that wants the X factor – a company that goes the extra mile."

I was very happy with the whole process, from design to install, and they are always available for after sales service and questions.

It's good to have a professional large Kiwi company to support our growing industry. With their innovative ideas and products, they will sort any problem that may arise."

Michael Lumsden – Director, Coast to Coast Bees Limited

Box Handling	Page 4
Uncappers	Page 5
Looseners	Page 6
Extractors	Page 8
Heat Exchangers	Page 10
Centrifuges	Page 12
Wax Melting Tanks	Page 14
Filters	Page 15
Blending Tanks	Page 18
Scales	Page 19
Conveyors	Page 20
Drum Tippers	Page 22
Tip Tanks	Page 23
Pumps	Page 24
Crystalliser Tanks	Page 28
Platforms	Page 30
Thermalisers	Page 31
Accessories	Page 32
Turnkey Solutions	Page 34
Complete Fitout	Page 36
Installation	Page 38
Maintenance and Servicing	Page 39



Manual De-Boxer



CrystechNZ manual de-boxer to separate full and ¾ honey frames from boxes. Constructed from stainless steel with food grade plastic catch bin. Compressed air required.

PRODUCT NUMBER	OPTION
2-200-01-01-00	Left hand scrape table
2-200-01-01-01	Right hand scrape table



Box Lifter – Single Stack



The CrystechNZ single stack box lifter allows you to lift and move a single stack of full or ¾ honey boxes up to five boxes high. Constructed from stainless steel with castor wheels. Compressed air required.

PRODUCT NUMBER
2-200-02-01-00



BeeQuip S3B Uncapper



Cut back honey comb from honey frames at up to 11 frames per minute. Constructed from stainless steel with single phase 10-amp plug.

PRODUCT NUMBER	OPTION
2-201-01-01-00	Model 200 – outfeed 345mm lower than infeed
2-201-01-01-01	Model 380 – outfeed 170mm lower than infeed
2-201-01-01-02	To fit CrystechNZ honey loosener

BeeQuip S4B Uncapper



Cut back honey comb from honey frames at up to 11 frames per minute. Constructed from stainless steel with single phase 10-amp plug.

PRODUCT NUMBER	OPTION
2-201-01-02-00	Model SB4 – outfeed 550mm lower than infeed

CrystechNZ Uncapper Hot Water Unit

Our CrystechNZ hot water unit supplies hot water to the uncapper with a 1.5 Kw heating element and thermostat control. Constructed from stainless steel with single phase 10-amp plug.

PRODUCT NUMBER	OPTION
2-201-02-01-00	850mm L x 170mm W x 300mm H

Uncapper Auger Frame and Sump



Direct honey and wax slurry into pump with the auger frame and sump. Fits pump 100-02-04-00 (pump excluded). Constructed from stainless steel with adjustable feet.

PRODUCT NUMBER	OPTION
2-201-03-01-00	Standard product – no stirrer
2-201-03-02-00	Includes motorised stirrer and single phase 10-amp plug

Manual Loosener on a Trolley



Loosen honey in full and ¾ honey frames. Hand powered operation and suitable for viscous honey. This machine is quiet and easy to operate with an innovative clean design. Constructed from stainless steel and mounted on a mobile stand.

PRODUCT NUMBER
2-202-01-01-00



Semi-Auto Loosener on a Trolley

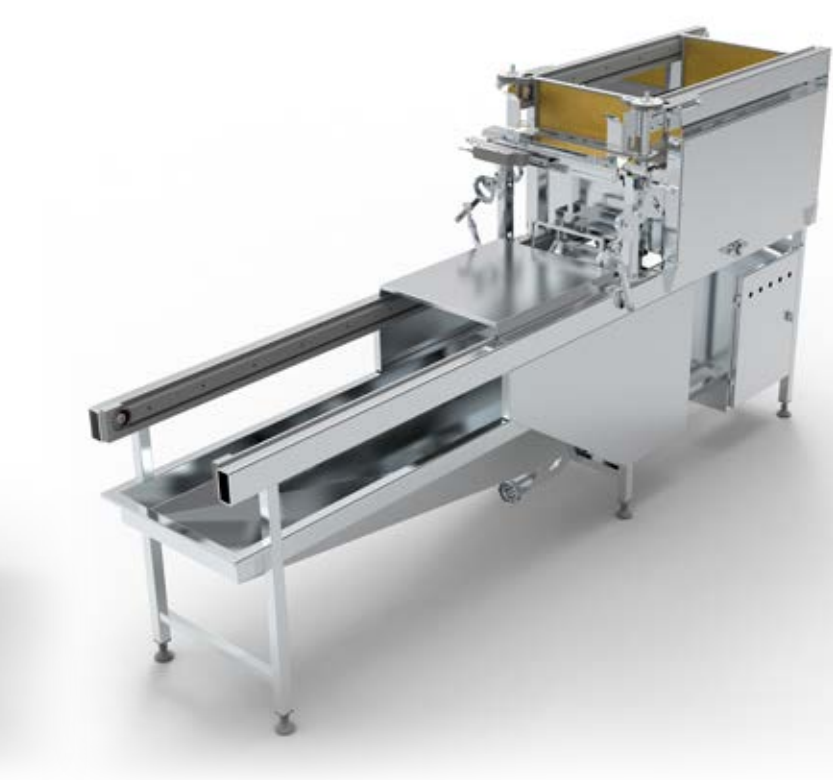


Loosen honey in full or ¾ honey frames – suitable for viscous honey. This machine is quiet and easy to operate with an innovative clean design and air powered operation. Constructed from stainless steel and mounted on a mobile stand with 10-amp single phase lead. Compressed air required.

PRODUCT NUMBER	OPTION
2-202-01-01-01	Standard product – manual start actuation
2-202-01-01-02	With auto sensor – auto start actuation



CrystechNZ Honey Loosener



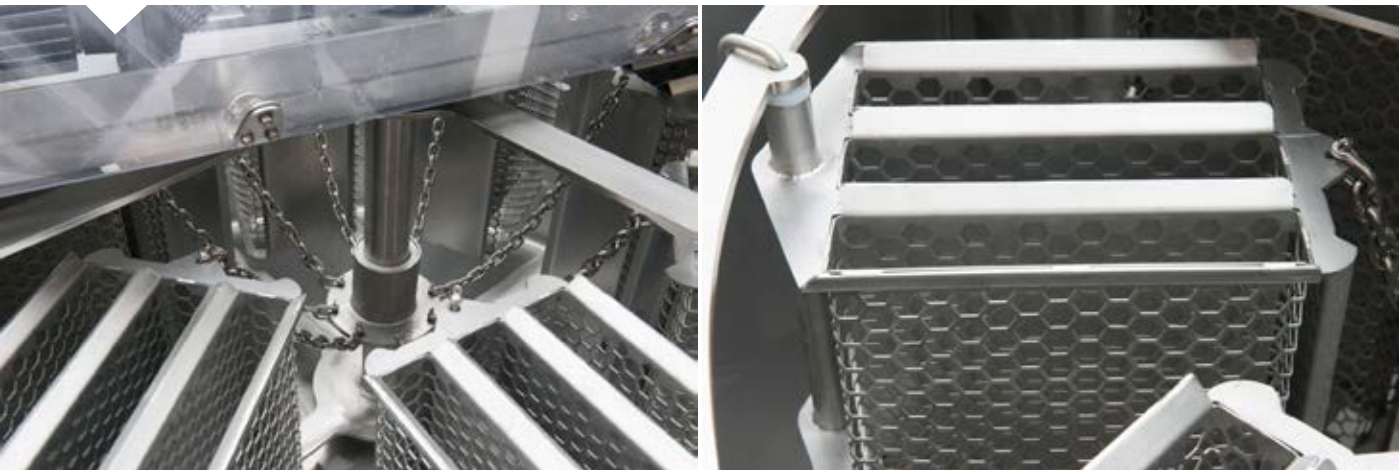
Loosen honey in full and ¾ honey frames with powered infeed and outfeed chain conveyors. Automatic start and continuous cycle operation with integrated honey sump. Integrated honey sump to fit with pump 1-101-01-01-00 (pump excluded). Constructed from stainless steel with 10-amp single phase lead. Compressed air required.

PRODUCT NUMBER	OPTION
2-202-02-01-00	Standard product – no de-boxer
2-202-02-01-01	With integrated de-boxer
UPGRADE OPTION	
2-201-01-01-02	Model S3B uncapper in line



CrystechNZ Honey Extractor

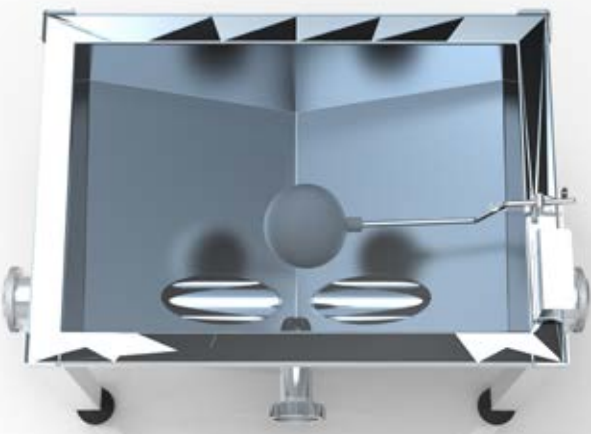
High quality honey extractor, spins honey from the honey comb on the frames once cut or pricked. Lids open automatically and 2 mode switch. Constructed from stainless steel. 1000mm high x 1520mm diameter. Compressed air required.



PRODUCT NUMBER	OPTION
2-203-01-02-18	18 frames – 9x2 frame baskets, 15-amp single phase plug
2-203-01-01-24	24 frames – 8x3 frame baskets, 15-amp single phase plug
2-203-01-01-27	27 frames – 9x3 frame baskets, 20-amp three phase plug
UPGRADE OPTIONS	
2-203-01-01-02	3 mode switch – 3 pre-set spin mode switch options
2-203-01-01-03	Base cone heat jacket – welded dimple pad on the base of the extractor (excludes heat source)
2-203-01-01-04	Touch screen PLC control – programmable mode options
2-203-01-01-05	Heat gun port – welded fitting into the extractor bridge to hold heat gun

Extractor Collection Sump

Sump to fit to collect honey from extractor, with level sensor to control pump (pump excluded).



PRODUCT NUMBER	OPTION
2-203-02-01-00	Sump and float switch – connect to a VSD controlled pump (VSD & pump excluded)
2-203-02-01-01	Sump and level sensors – product high and low-level sensors connect to a VSD controlled pump (pump excluded)



Heat Exchangers

Tube in Tube Heat Exchanger

Multi tube heat exchanger to boost honey temperature prior to wax separation. 19 x 18mm tubes x 2000mm long and constructed from stainless steel.

PRODUCT NUMBER

2-204-01-01-20

Tube in Tube with Rotary Scraper



Multi tube heat exchanger to boost honey temperature prior to wax separation. 26 tubes with a powered scraper, 3500mm long, and digital temperature display to process 1250kg per hour. Constructed from stainless steel with 10-amp single phase plug.

PRODUCT NUMBER

2-204-01-02-35

CrystechNZ Tube in Tube Heat Exchanger Skid

Fully assembled tube in tube exchanger skid to boost honey temperature prior to wax separation. 50 litre hot water cylinder with circulation pump. Constructed from stainless steel with 15-amp single phase plug.

PRODUCT NUMBER

2-204-01-03-00



Heat Exchangers

Internal SSHE

Internal scrape surface 5.5 kW heat exchanger to cool honey down after flash heating. 40-20° cooling at 500kg per hour. Includes control box with variable speed control. Constructed from stainless steel with 20-amp three phase plug. Excludes cooling water supply.

PRODUCT NUMBER

2-302-01-01-00



External SSHE with Control Box

CrystechNZ external scrape surface heat exchanger to cool honey down after flash heating. 45-20° cooling at 1200kg per hour. Includes control box with variable speed control. Constructed from stainless steel with 10-amp single phase plug. Excludes cooling water supply.

PRODUCT NUMBER

2-302-02-01-00



GForce Centrifuge

Vertical centrifuge to separate wax from extracted honey with 1000kg per hour continuous separation and variable speed drive. Constructed from stainless steel with 15-amp single phase plug.



PRODUCT NUMBER	OPTION
2-205-01-02-00	Standard product
UPGRADE OPTIONS	
2-205-01-02-01	With wax cutter – powered wax cutting knife
2-205-01-02-02	Water jet – spray nozzle to soften wax and assist with cutting
2-205-01-02-03	Mobile wax bin – to catch shavings, constructed from stainless steel on castor wheels
2-205-01-02-04	PLC control box – allows auto start up and shut down sequence



GForce Out Feed Buffer Tank

Designed to fit GForce outlet.



PRODUCT NUMBER	OPTION
2-205-01-02-05	Float switch – connects to VSD controlled pump (pump excluded)
2-205-01-02-06	Level sensors – product high and low sensors to connect to VSD controlled pump (pump excluded)



CrystechNZ 25 Litre Centrifuge

Horizontal centrifuge to separate wax from extracted honey. Closed circuit separation, variable speed drive, not suitable for use with un-capper. Constructed from stainless steel with 15-amp single phase plug.



PRODUCT NUMBER
2-205-01-01-00

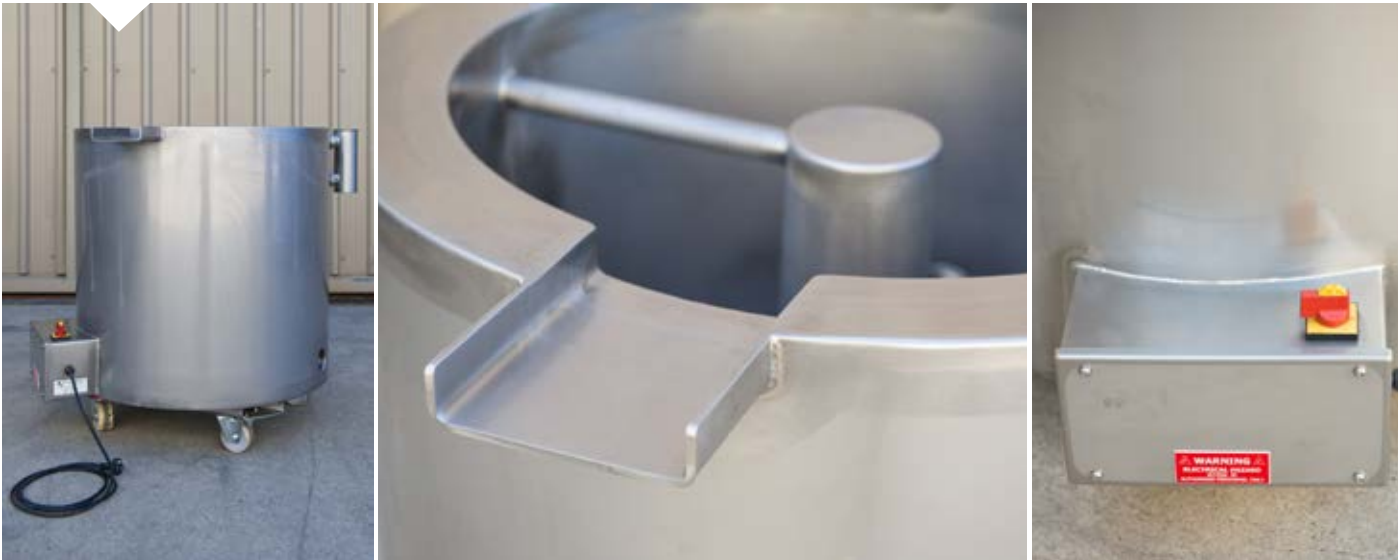


Wax Melting Tank



Melting tank to separate wax from waste with thermostat-controlled water jacket. Constructed from stainless steel with castor wheels.

PRODUCT NUMBER	OPTION
2-206-01-01-00	1.5 kW, 10-amp single phase plug
2-206-01-01-01	3.0 kW, 15-amp single phase plug
UPGRADE OPTION	
2-206-01-01-02	Wax melting option – basket with a perforated screen to assist with waste removal



Static Wedge Wire



Static wedge wire to coarse filter honey – right angle filter. Constructed from stainless steel.

PRODUCT NUMBER	OPTION
2-103-01-01-02	2" 200 Micron wedge wire insert
2-103-01-01-05	2" 500 Micron wedge wire insert
2-103-01-01-10	2" 1000 Micron wedge wire insert
2-103-01-02-02	2.5" 200 Micron wedge wire insert
2-103-01-02-05	2.5" 500 Micron wedge wire insert
2-103-01-02-10	2.5" 1000 Micron wedge wire insert
2-103-01-03-02	3" 200 Micron wedge wire insert
2-103-01-03-05	3" 500 Micron wedge wire insert
2-103-01-03-10	3" 1000 Micron wedge wire insert



Rotary Filters



2" rotary self-cleaning wedge wire filter – to filter contaminants from honey with reduced pressure. 0-10 bar manual pressure gauge with manual dump valve, three phase power (excludes electrical control).

PRODUCT NUMBER	OPTION
2-103-03-01-02	Small 200 Micron 80mm x 340mm screen
2-103-03-01-05	Small 500 Micron 80mm x 340mm screen
2-103-03-02-02	Medium 200 Micron 110mm x 340mm screen
2-103-03-02-05	Medium 500 Micron 110mm x 340mm screen
2-103-03-03-02	Large 200 Micron 110mm x 580mm screen
2-103-03-03-05	Large 500 Micron 110mm x 580mm screen

Rotary Filter Auto Dump



Rotary filter auto dump with automatic pressure differential pneumatic valve. Control box, 0-10 bar digital pressure gauges and 10-amp single phase plug.

PRODUCT NUMBER
2-103-03-04-00

Bag Filter Short



2" size 1 top entry short bag filter to fine filter honey. Includes short displacement torpedo and leg set. 0-10 bar manual pressure gauge.

PRODUCT NUMBER	OPTION
2-103-02-01-00	Standard product
FILTER BAGS	
2-103-02-01-005	50 Micron bag
2-103-02-01-010	100 Micron bag
2-103-02-01-015	150 Micron bag
2-103-02-01-020	200 Micron bag



Bag Filter Long



2" size 2 top entry short bag filter to fine filter honey. Includes long displacement torpedo and leg set. 0-10 bar manual pressure gauge.

PRODUCT NUMBER	OPTION
2-103-02-02-00	Standard product
FILTER BAGS	
2-103-02-02-005	50 Micron bag
2-103-02-02-010	100 Micron bag
2-103-02-02-015	150 Micron bag
2-103-02-02-020	200 Micron bag

Blending Tank with Control Box

CrystechNZ blending tank to blend extracted honey with a stainless steel paddle agitator. Freestanding un-insulated tank with motor gearbox with flat top single sided opening lid and single function on/off control box. Constructed from stainless steel.

PRODUCT NUMBER	OPTION
2-208-01-01-22	2.2-ton tank – 15-amp single phase plug
2-208-01-01-28	2.8-ton tank – 15-amp single phase plug
2-208-01-01-42	4.2-ton tank – 20-amp three phase plug
2-208-01-01-56	5.6-ton tank – 20-amp three phase plug
2-208-01-01-84	8.4-ton tank - 20-amp three phase plug



4 Drum Pallet Scale

CrystechNZ 4 drum pallet scale with pump control to fill drums to a set weight. Control box with manual and auto functions to control pump (pump excluded). 10-amp single phase plug.

PRODUCT NUMBER
2-209-01-01-00



Empty Box Conveyor

CrystechNZ empty box conveyor to move empty boxes on their side. Constructed from stainless steel with adjustable feet.



PRODUCT NUMBER	OPTION
2-210-01-01-24	2.4m roller conveyor
2-210-01-01-36	3.6m roller conveyor
2-210-01-03-24	2.4m overhead conveyor
2-210-01-03-36	3.6m overhead conveyor

Full Box Conveyor

CrystechNZ full box conveyor to move full boxes. Constructed from stainless steel with adjustable feet.



PRODUCT NUMBER	OPTION
2-210-01-02-24	2.4m roller conveyor
2-210-01-02-36	3.6m roller conveyor



Accumulation Chain Frame Conveyor

CrystechNZ honey frame conveyor to transport honey frames. Stainless steel powered by motor gearbox with integrated honey sump (pump excluded). Constructed from stainless steel with 10-amp single phase plug.

PRODUCT NUMBER	OPTION
2-210-02-01-20	2m conveyor
2-210-02-01-30	3m conveyor



CrystechNZ Twin Drum Tipper

Powered to lift and invert 300kg drums for draining.
Powered screw jack and control box for movement (up/down).
Constructed from stainless steel with 20-amp three phase plug.

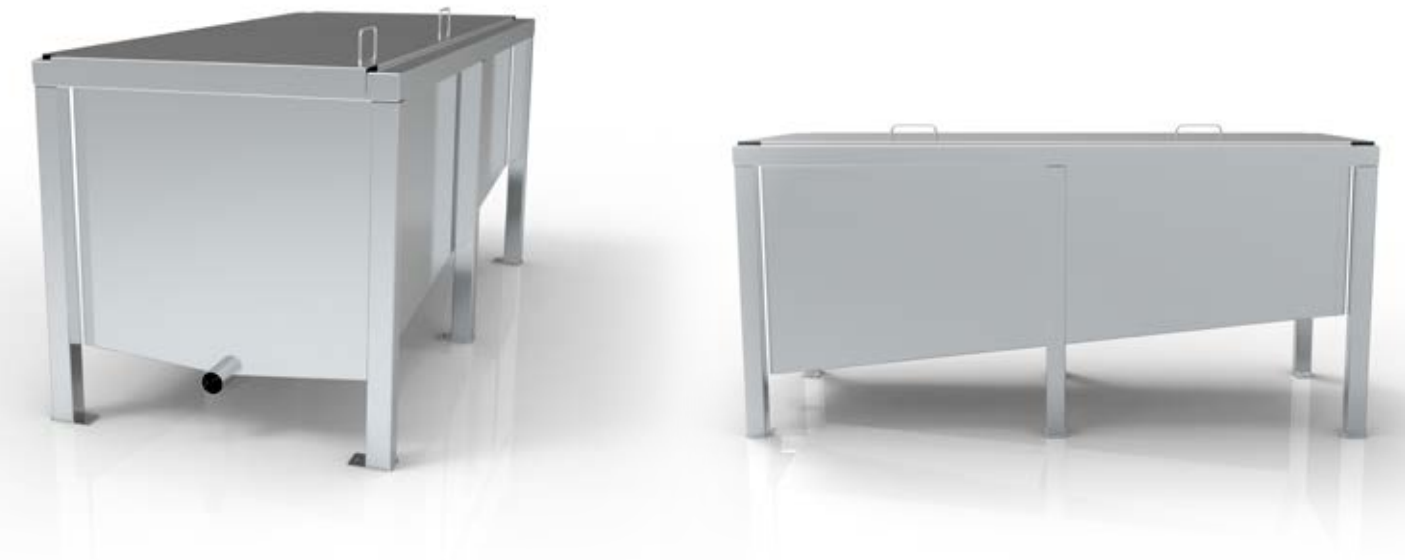
PRODUCT NUMBER
2-300-01-01-00



CrystechNZ Tip Tanks

Tip tanks to drain honey from drums with perforated strainer tray and full sliding lid, 3" butterfly valve outlet. Constructed from stainless steel.

PRODUCT NUMBER	OPTION
2-301-01-01-09	900kg
2-301-01-01-18	1800kg
2-301-01-01-24	2400kg



2" Flexible Impeller Pump with VSD and Stand

Flexible impeller pump mounted to stand with variable speed controller and 10-amp single phase plug.



PRODUCT NUMBER
2-100-01-01-00



Progressive Cavity Pump

Progressive cavity pump with SEW inverter, VSD, stand and PSD 30 pressure switch – trolley mounted.



PRODUCT NUMBER	OPTION
2-100-02-01-00	2" 6 bar single stage 0.75 kW, 10-amp with single phase plug
2-100-02-01-01	2" 12 bar two stage 0.75 kW, 10-amp with single phase plug
2-100-02-02-00	2.5" 6 bar single stage 1.1 kW, 10-amp with single phase plug
2-100-02-02-01	2.5" 12 bar two stage 1.5 kW, 10-amp with single phase plug
2-100-02-03-00	3" 6 bar single stage 2.2 kW, 15-amp with single phase plug
2-100-02-03-01	3" 12 bar two stage 2.2 kW, 15-amp with single phase plug



Dual Auger Fed Progressive Cavity Pump

3" progressive cavity pump with VSD and stand. Two stage 2.2 kW, on base with SEW inverter and PSD 30 pressure switch.



PRODUCT NUMBER
2-100-03-01-00

Auger Fed Progressive Cavity Pump

2.5" 6 bar progressive cavity pump with VSD, stand and pre-feeding screw. Single stage 1.1 kW, 54rpm (pump and motor only).



PRODUCT NUMBER
2-100-02-04-00



CIP Pump on Trolley

CIP mobile pump, EDX 20/20 1.5 kW on a four-wheel trolley with VSD. 10-amp single phase plug.



PRODUCT NUMBER
2-100-04-01-00

CrystechNZ Crystalliser Tanks Single Speed

CrystechNZ single speed crystalliser tank with control box to crystallise honey. Dual flow agitator with motor and gear box, cooling dimple jacket on sides and base (chilled water supply excluded), outlet pipe with butterfly valve and programmed electrical box. Constructed from stainless steel.



PRODUCT NUMBER	OPTION
2-303-01-01-02	2 drums with 15-amp single phase plug
2-303-01-01-03	3 drums with 15-amp single phase plug
2-303-01-01-08	8 drums with 15-amp single phase plug, sides stainless steel clad and insulated and 2x spray balls with connecting pipe
2-303-01-01-12	12 drums with 20-amp three phase plug, sides stainless steel clad and insulated and 2x spray balls with connecting pipe
2-303-01-01-16	16 drums with 20-amp three phase plug, sides stainless steel clad and insulated and 2x spray balls with connecting pipe
2-303-01-01-20	20 drums with 20-amp three phase plug, sides stainless steel clad and insulated and 2x spray balls with connecting pipe
2-303-01-01-24	24 drums with 20-amp three phase plug, sides stainless steel clad and insulated and 2x spray balls with connecting pipe



CrystechNZ Crystalliser Tanks Dual Speed

CrystechNZ dual speed crystalliser tank with control box to homogenise and crystallise honey. Dual flow agitator with motor and gear box, cooling dimple jacket on sides and base (chilled water supply excluded). Stainless steel clad and insulated sides, outlet pipe with butterfly valve, two spray balls with connecting pipe and programmed electrical box. Constructed from stainless steel with 20-amp three phase plug.

PRODUCT NUMBER	OPTION
2-303-01-02-03	3 drums
2-303-01-02-08	8 drums
2-303-01-02-12	12 drums



Custom built platforms to suit your tank room requirements, stainless steel construction, anti-slip tread surfaces.



Designed for controlled flash heating, fine filtration and cooling, our Thermalisation plants range from manual to automatic with touch screen operation to meet your processing requirements.

Each plant is tailored to your needs, contact us to find out more.

OPTIONS	
300kg per hour	
600kg per hour	
1200kg per hour	
1500kg per hour	



Drum Opener



Wrench for easy opening of drum caps – allows for loosening and tightening of both large and small caps.

PRODUCT NUMBER
2-101-01-01-00

RJT Spanner



RJT nut spanner – to suit 1” – 4” RJT connection round nuts.

PRODUCT NUMBER
2-101-01-02-00

Drum Sampler



Drum honey sampler allows you to take up to 100mls from the drum.

PRODUCT NUMBER
2-101-02-01-00

Butterfly Drum Valve



BSP thread to 2” butterfly drum valve.

PRODUCT NUMBER	OPTION
2-101-02-02-00	2” RJT male
2-101-02-02-01	45-degree bend

Pressure Gauge Dial 0-10 Bar



Manual pressure gauge with 1 ½” tri-ferrel connection.

PRODUCT NUMBER
2-101-03-01-00

Pressure Gauge Digital PSD 30



Digital pressure gauge PSD 30 with 1 ½” tri-ferrel connection.

PRODUCT NUMBER
2-101-03-01-01

Teltherm Temperature Gauge



Temperature gauge with 1 ½” tri-ferrel connection.

PRODUCT NUMBER	OPTION
2-101-03-02-00	Small
2-101-03-02-01	Large Sanitary

Product Sight Glass



Product sight glass with 2” RJT male part ends.

PRODUCT NUMBER
2-101-03-03-00

Turnkey Solutions

We work with our clients to provide a complete turnkey solution. Customised to your needs we enable you to take your product from the hive to the shelf – extraction, processing and packaging.

This includes building design, machinery design, machinery manufacture, delivery and installation.

Machinery is pre-assembled in our factory, so time spent on site installation is kept to a minimum.

Once you are up and running we provide both on-site and off-site technical support with ongoing maintenance contracts and support available.





Installation

At CrystechNZ we can come on site to install your plant once we have finished the manufacturing stage. All of our solutions are pre-assembled and connected in our factory so that it can be delivered and installed on site with minimal fuss.

This gives us an opportunity to run through the plant with you and answer any questions you have so that you can get up and running efficiently.



Maintenance and Servicing

When you purchase extraction or processing plant with CrystechNZ, we are committed to ensuring you receive ongoing maintenance to keep your plant in tip top shape, extending its service life and ensuring the ongoing production of high quality honey. Our team are also able to offer maintenance packages for most other brands of plant.

If you have not had any servicing done on your plant in the last 2-3 years, please contact our team to review your maintenance requirements. We will put together a tailored plan to suit your requirements.





FROM THE HIVE TO THE SHELF